



SQL Server 2008 Express - Installation Guide

Introduction

Contents

Revision table.....	2
1 Introduction.....	3
2 SQL Server 2008 Express installation	3
2.1 Installation.....	3
3 Post installation steps.....	22

Revision table

Date	Who	Comment
25-02-2010	HKP	Document created
07-04-2011	HKP	Updated with link to R2

1 Introduction

This document shows how to modify the standard settings in SQL Server 2008 Express or SQL Server 2008 R2 Express installation for use with NaviEdit.

An automated installation script which installs and configures the SQL Server 2005 Express SP4 for use with NaviEdit can be found at the EIVA installation DVD.

The SQL Server should be installed before installing NaviEdit.

If any other version of the SQL Server is installed on the same computer, un-installation of this SQL Server is recommended. The NaviEdit database files used by NaviEdit are not removed when the SQL Server is uninstalled.

2 SQL Server 2008 Express installation

The SQL Server 2008 Express comes in two different versions:

- SQL Server 2008 Express
- SQL Server 2008 R2 Express

SQL Server 2008 was released August 2008. SQL Server 2008 R2 was released April 2010.

In relation to NaviEdit there is no difference between the two versions.

Link to the SQL Server 2008 Express SP2 for both 32 bit and 64 bit Windows systems. You should select the file with „_x64“ postfix, if you are running a 64 bit Windows version:

<http://www.microsoft.com/downloads/en/details.aspx?FamilyID=40ACF55F-0715-4BB0-9735-D02FC2C8A7AF>

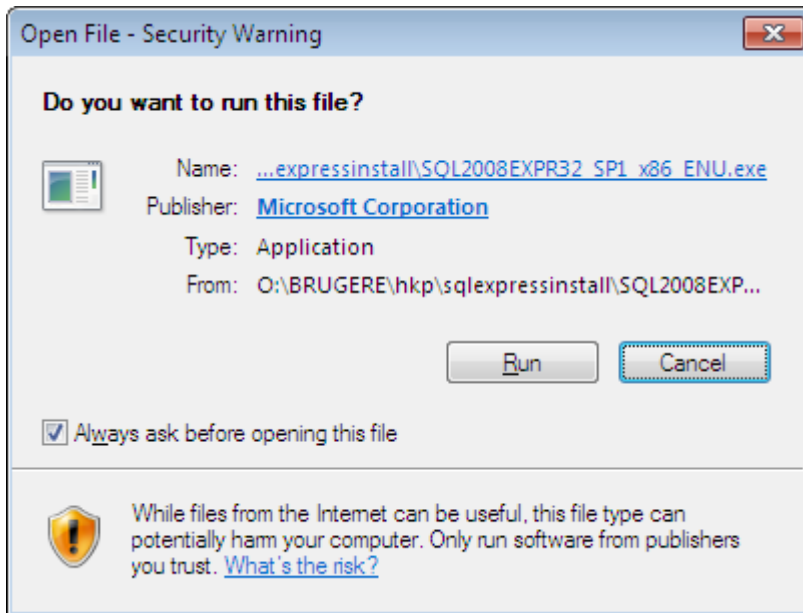
Link to the SQL Server 2008 R2 Express for both 32 bit and 64 bit Windows systems. You should select the file with „_x64“ postfix, if you are running a 64 bit Windows version:

<http://www.microsoft.com/downloads/en/details.aspx?FamilyID=8b3695d9-415e-41f0-a079-25ab0412424b>

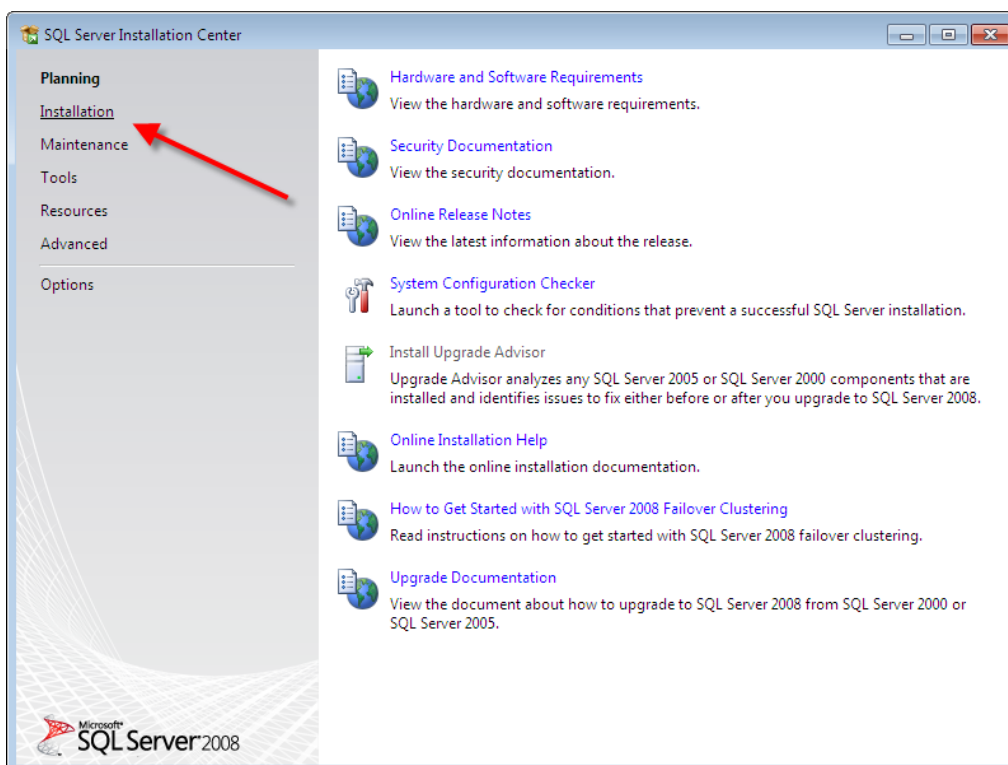
2.1 Installation

Below are screenshot from the installation process on Windows 7:

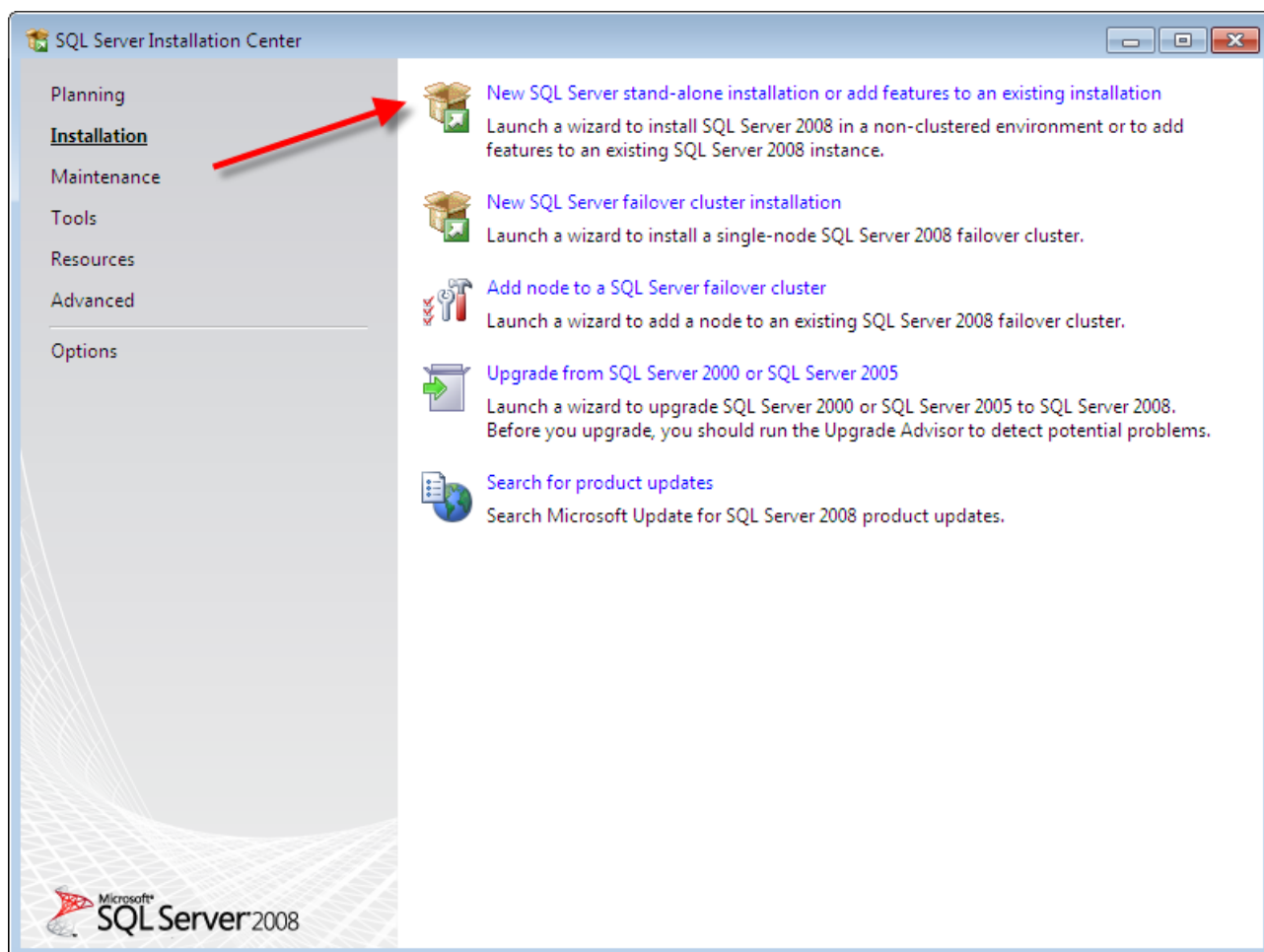
Run the installer:



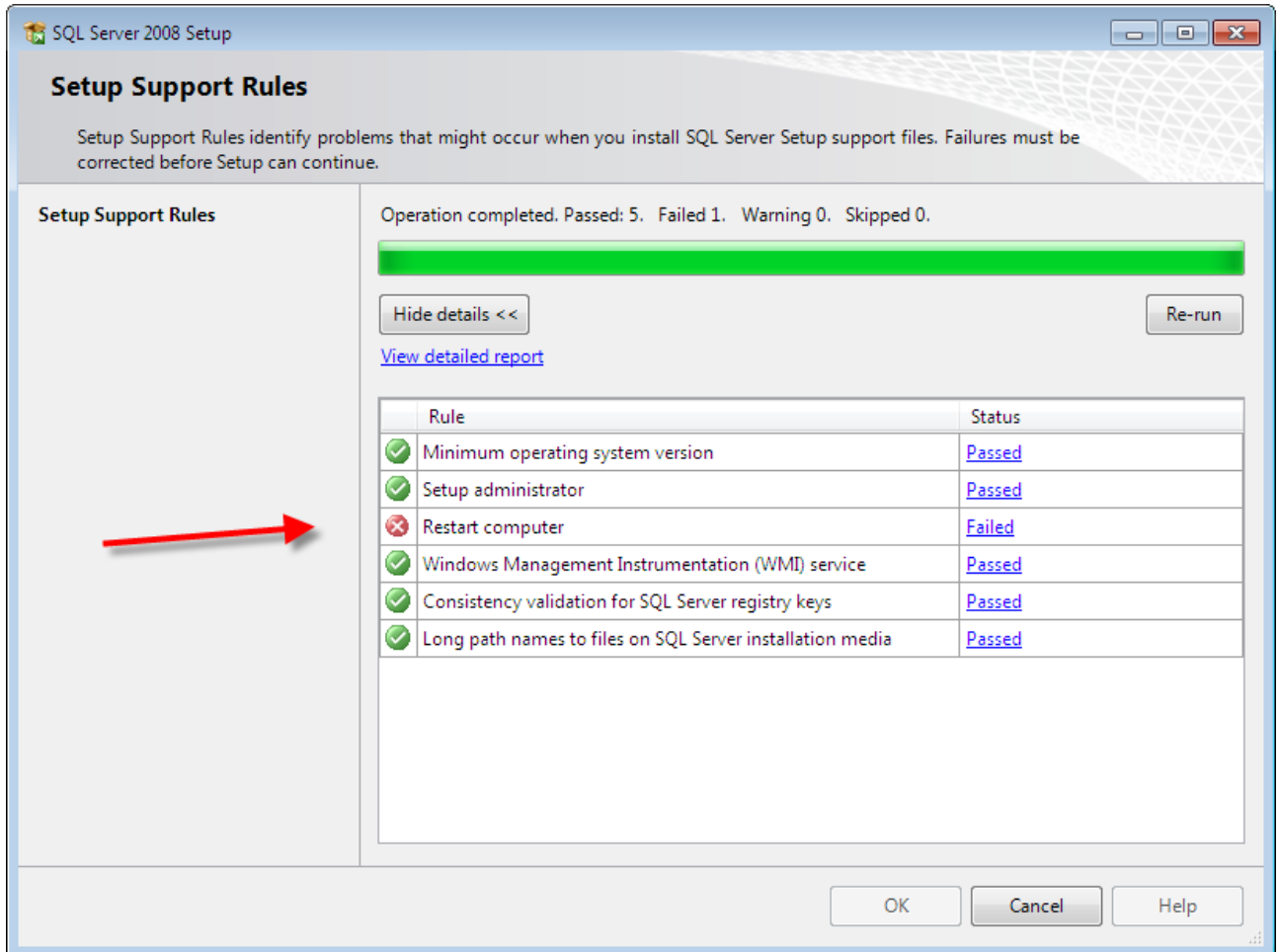
Wait while the files are extracted and select Installation:



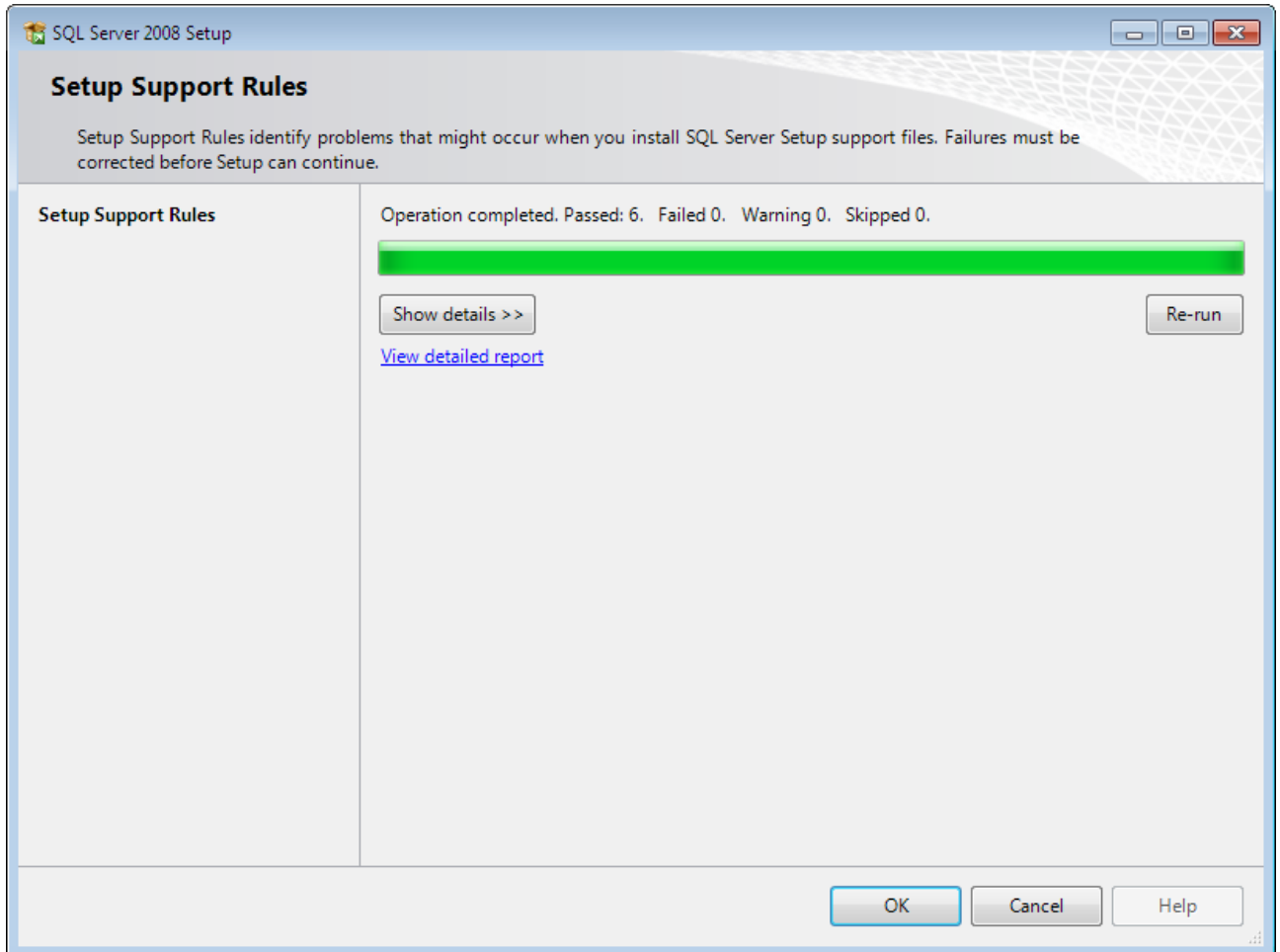
Select 'New SQL Server stand-alone installation':



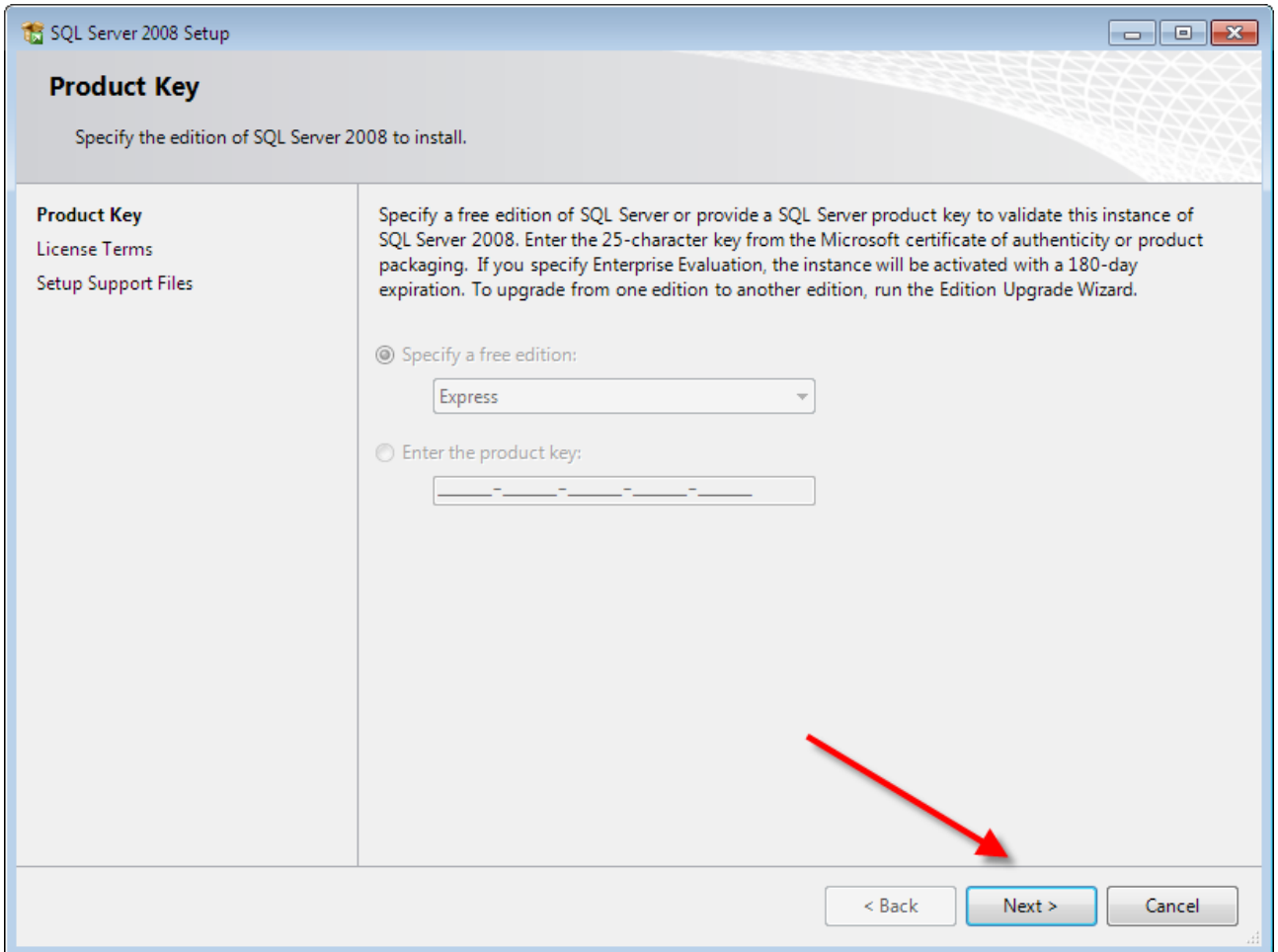
A reboot might be needed:



If so, reboot, and repeat the steps above:



Hit next on the 'Product Key' screen (No product key is needed for this free version):



SQL Server 2008 Setup

Product Key

Specify the edition of SQL Server 2008 to install.

Product Key
License Terms
Setup Support Files

Specify a free edition of SQL Server or provide a SQL Server product key to validate this instance of SQL Server 2008. Enter the 25-character key from the Microsoft certificate of authenticity or product packaging. If you specify Enterprise Evaluation, the instance will be activated with a 180-day expiration. To upgrade from one edition to another edition, run the Edition Upgrade Wizard.

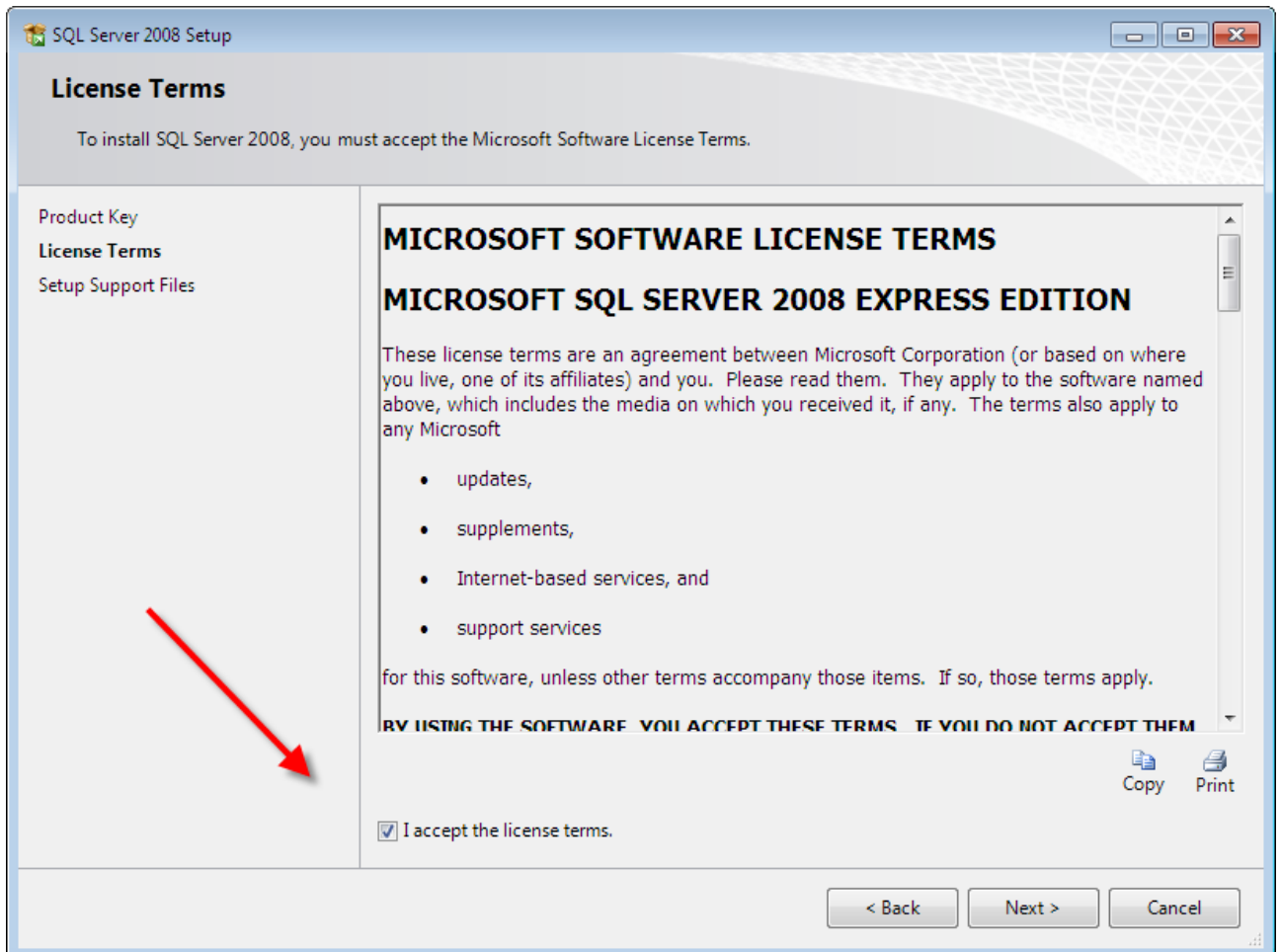
☒ Specify a free edition:

Express

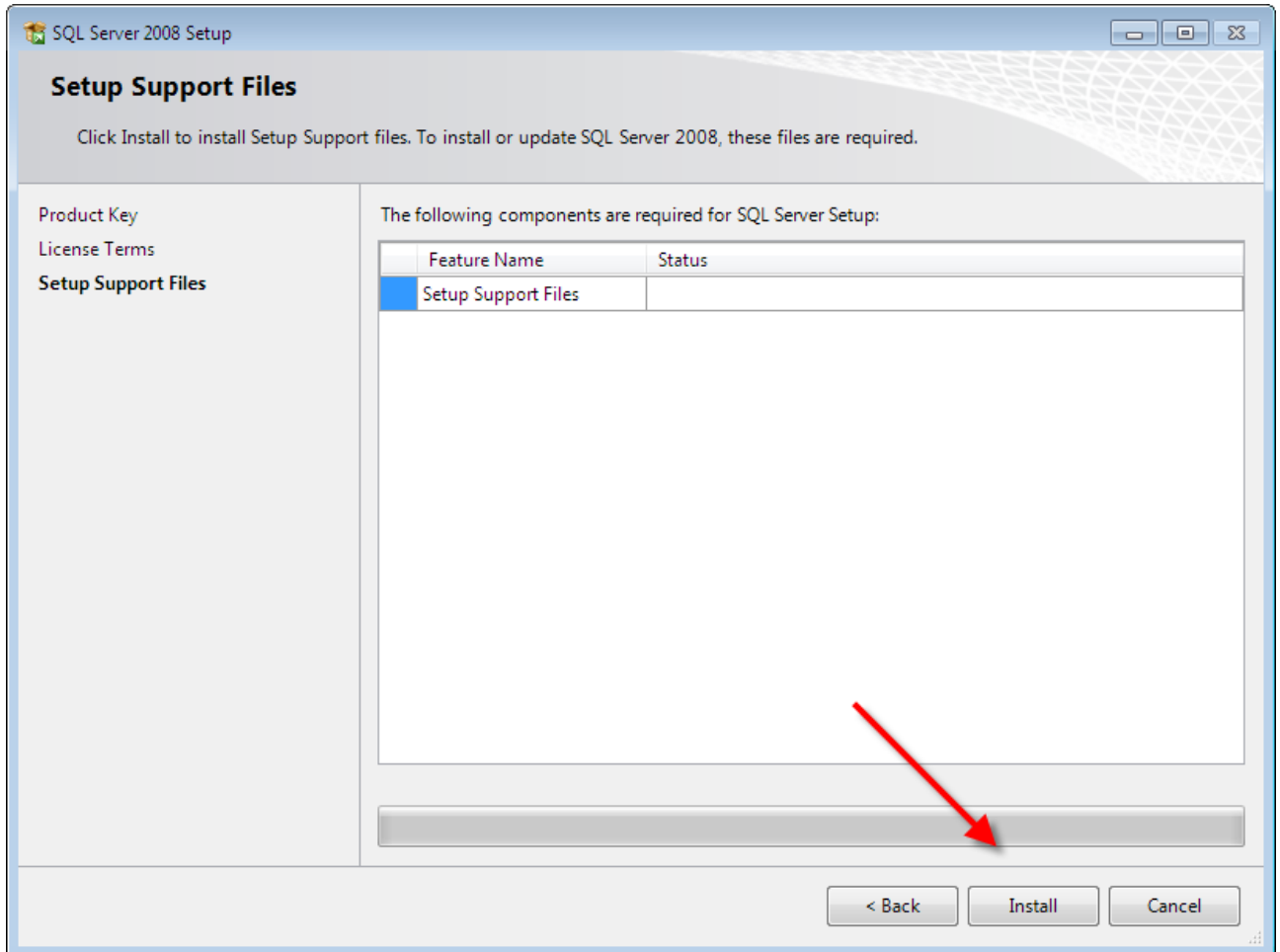
☐ Enter the product key:

< Back **Next >** Cancel

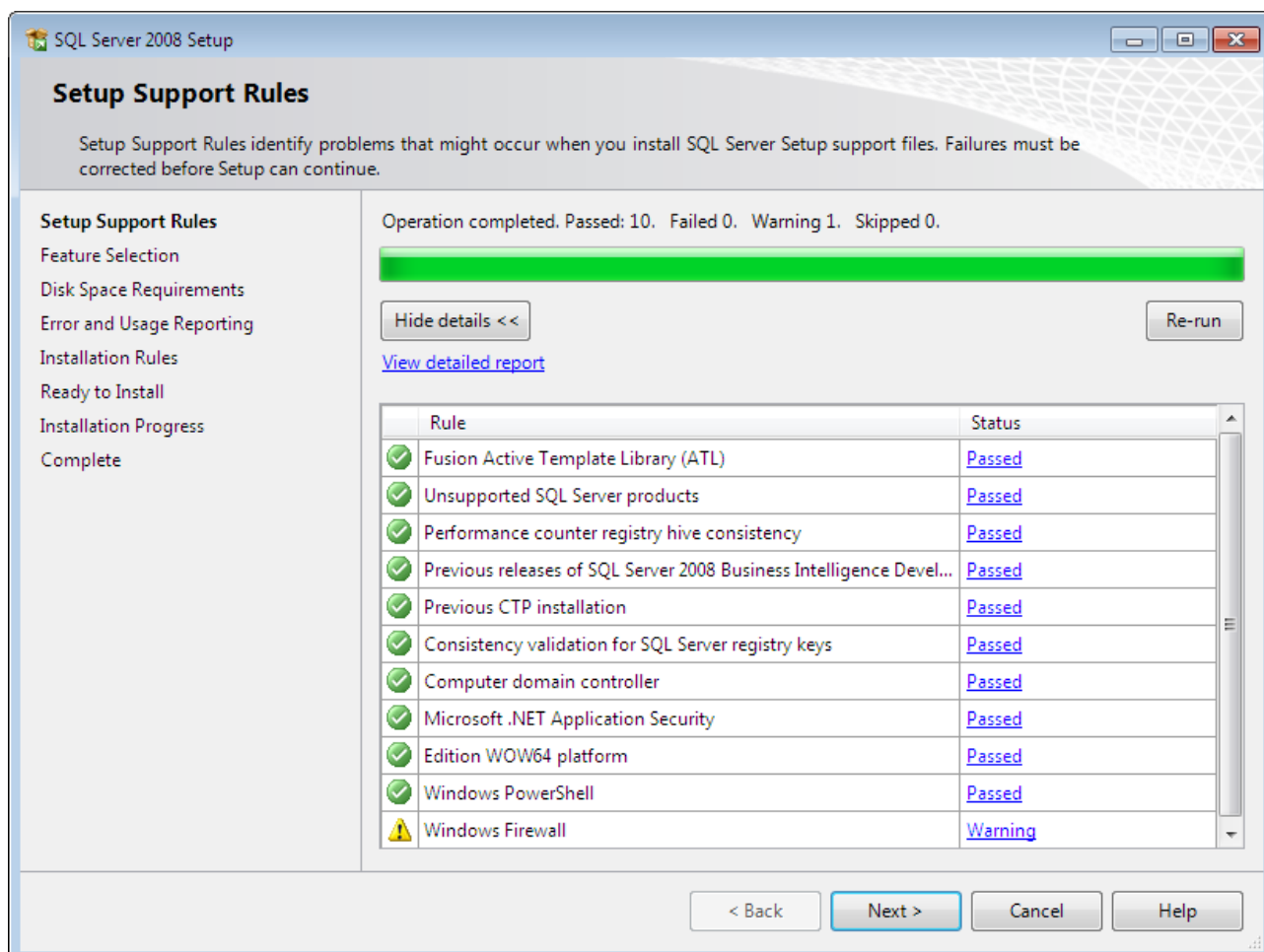
Accept the license:



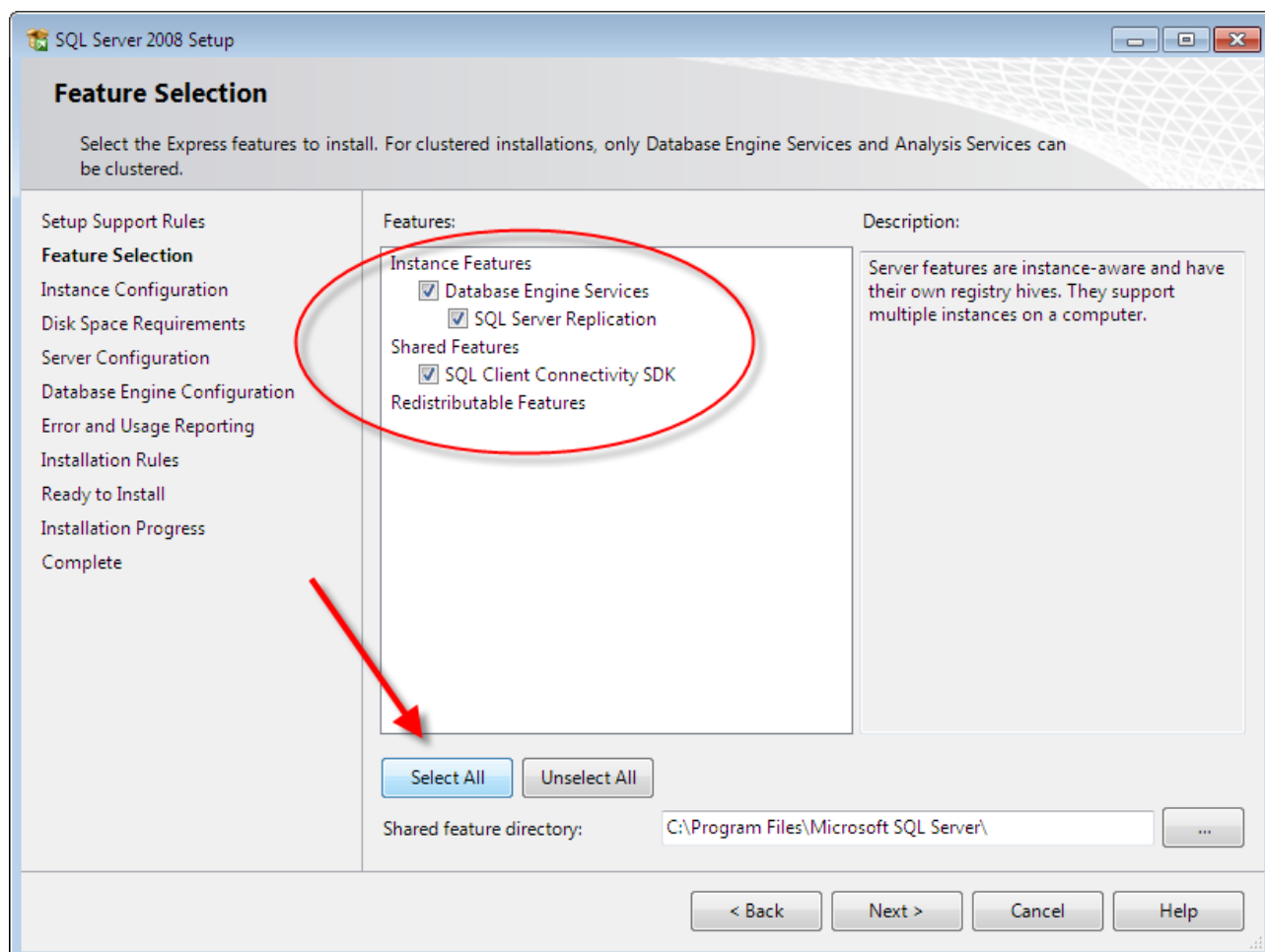
Hit Install:



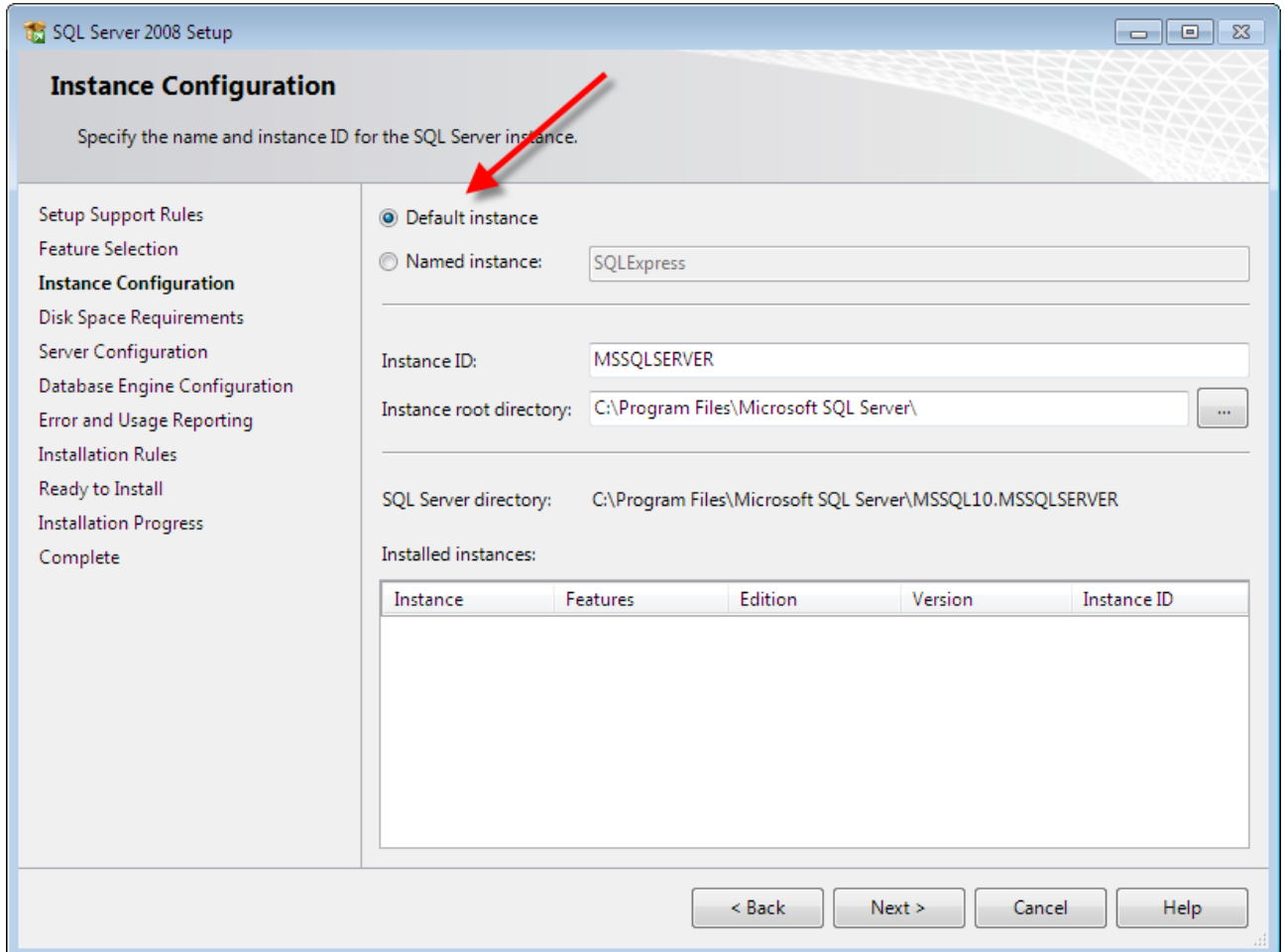
Hit next:



Select all features:



Change from Named Instance to the Default Instance, which automatically should be named MSSQLSERVER:



SQL Server 2008 Setup

Instance Configuration

Specify the name and instance ID for the SQL Server instance.

Setup Support Rules
Feature Selection
Instance Configuration
Disk Space Requirements
Server Configuration
Database Engine Configuration
Error and Usage Reporting
Installation Rules
Ready to Install
Installation Progress
Complete

☒ Default instance
☐ Named instance:

Instance ID:

Instance root directory: ...

SQL Server directory: C:\Program Files\Microsoft SQL Server\MSSQL10.MSSQLSERVER

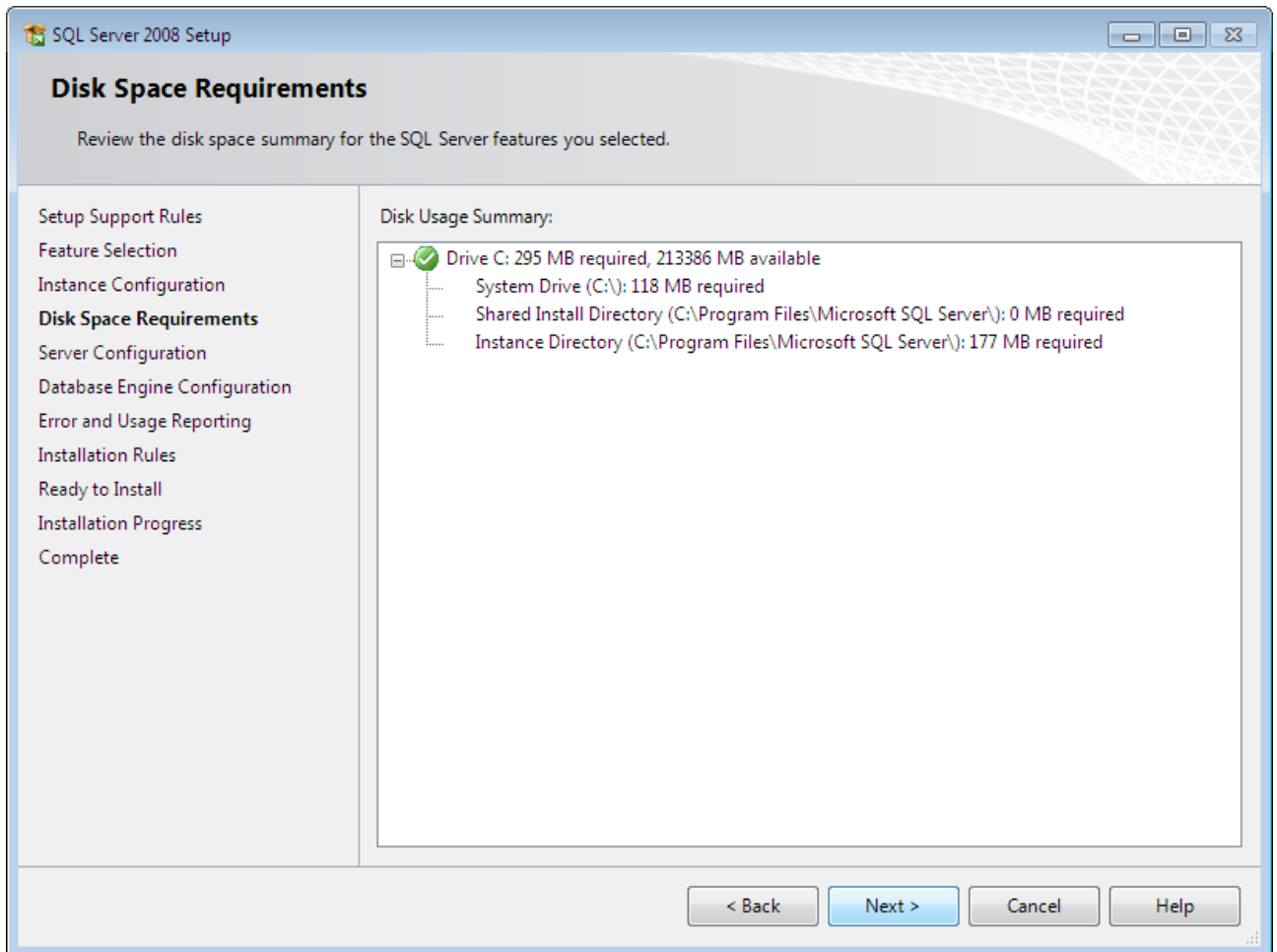
Installed instances:

Instance	Features	Edition	Version	Instance ID

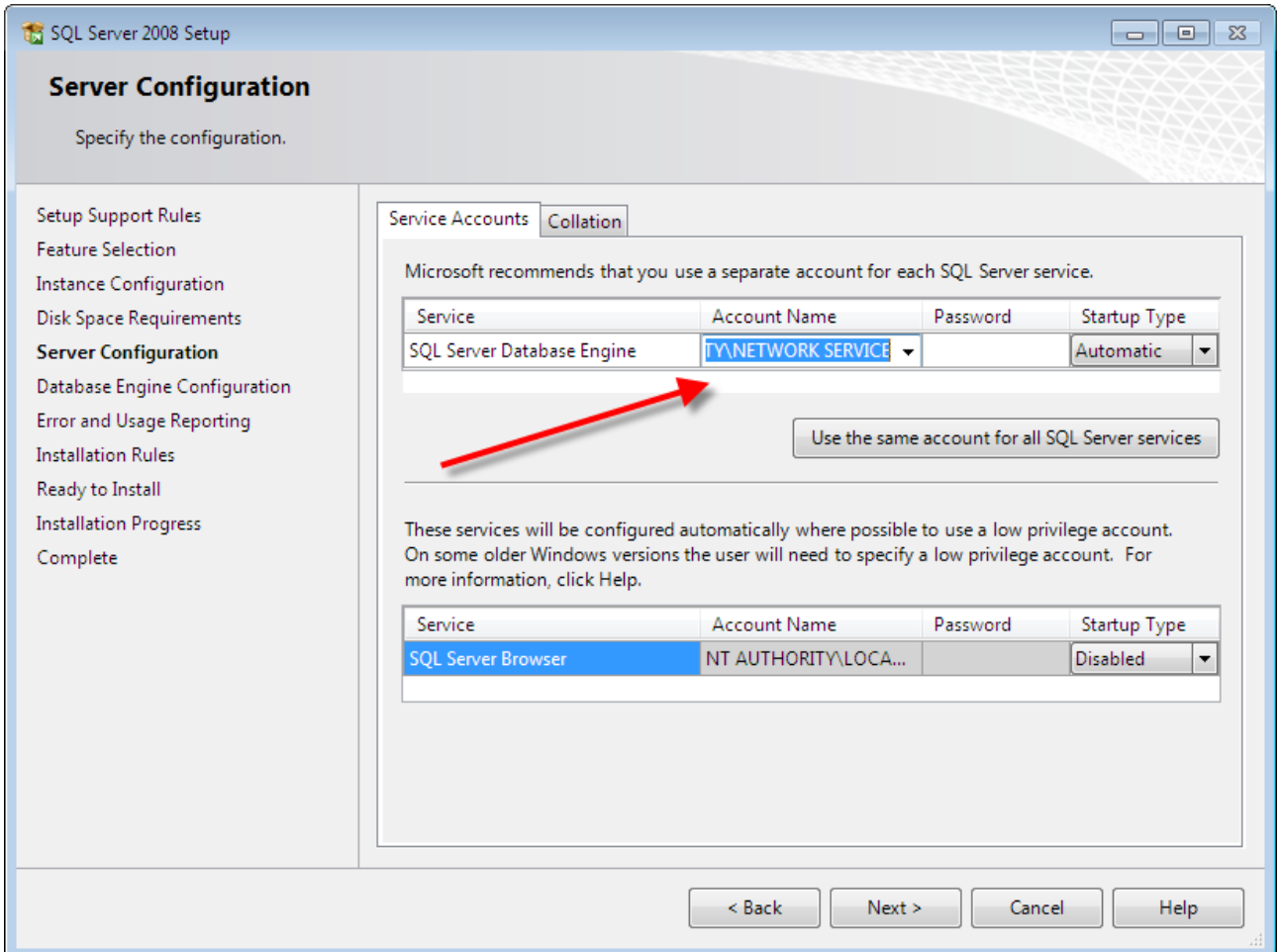
< Back Next > Cancel Help

If you cannot select the default instance, you have already installed a default instance of a SQL Server.

Press next:



Select the 'NT AUTHORITY\NETWORK SERVICE' for SQL Server Database Engine:



SQL Server 2008 Setup

Server Configuration
Specify the configuration.

Setup Support Rules
Feature Selection
Instance Configuration
Disk Space Requirements
Server Configuration
Database Engine Configuration
Error and Usage Reporting
Installation Rules
Ready to Install
Installation Progress
Complete

Service Accounts Collation

Microsoft recommends that you use a separate account for each SQL Server service.

Service	Account Name	Password	Startup Type
SQL Server Database Engine	NT AUTHORITY\NETWORK SERVICE		Automatic

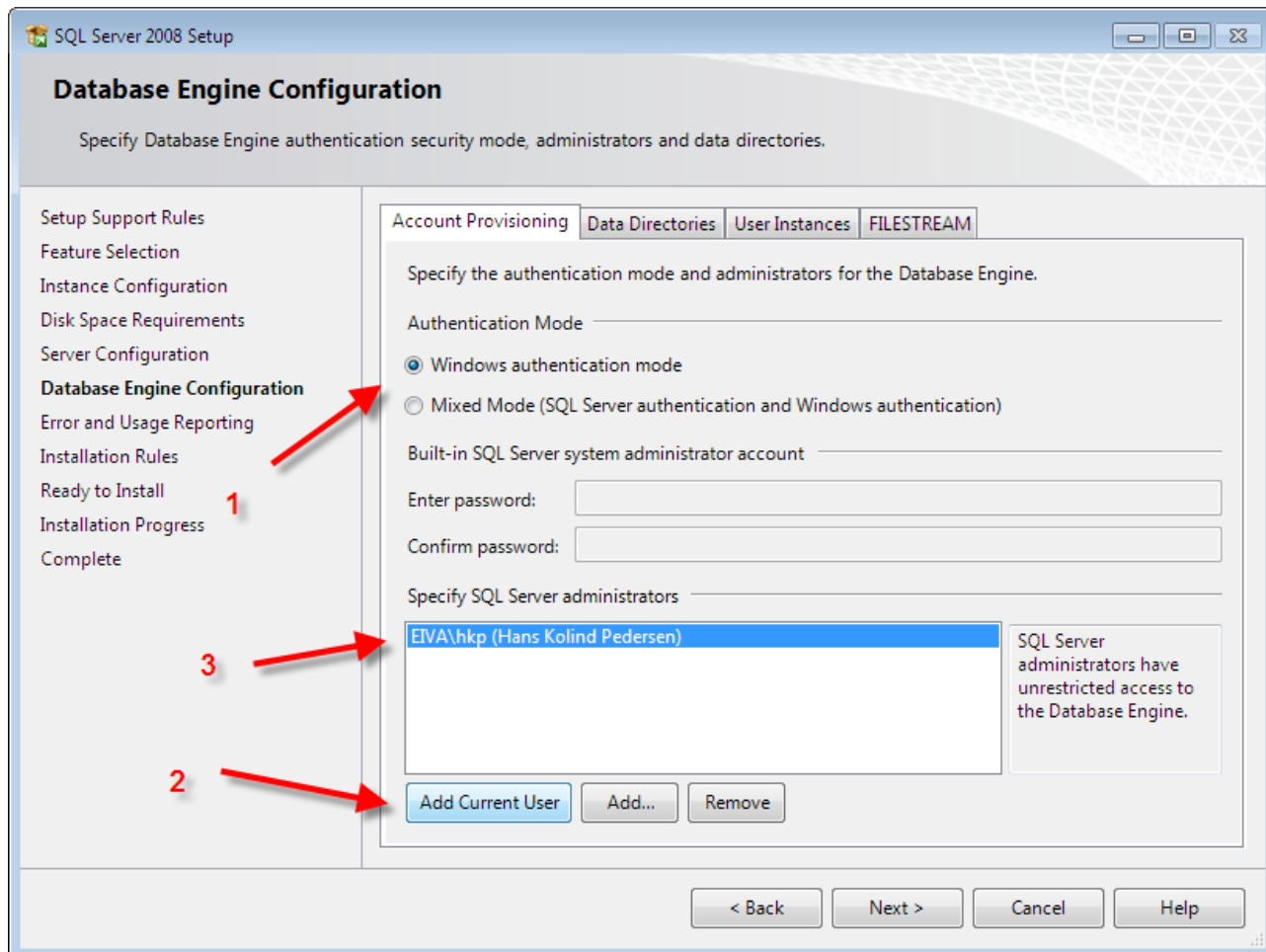
Use the same account for all SQL Server services

These services will be configured automatically where possible to use a low privilege account. On some older Windows versions the user will need to specify a low privilege account. For more information, click Help.

Service	Account Name	Password	Startup Type
SQL Server Browser	NT AUTHORITY\LOCAL SERVICE		Disabled

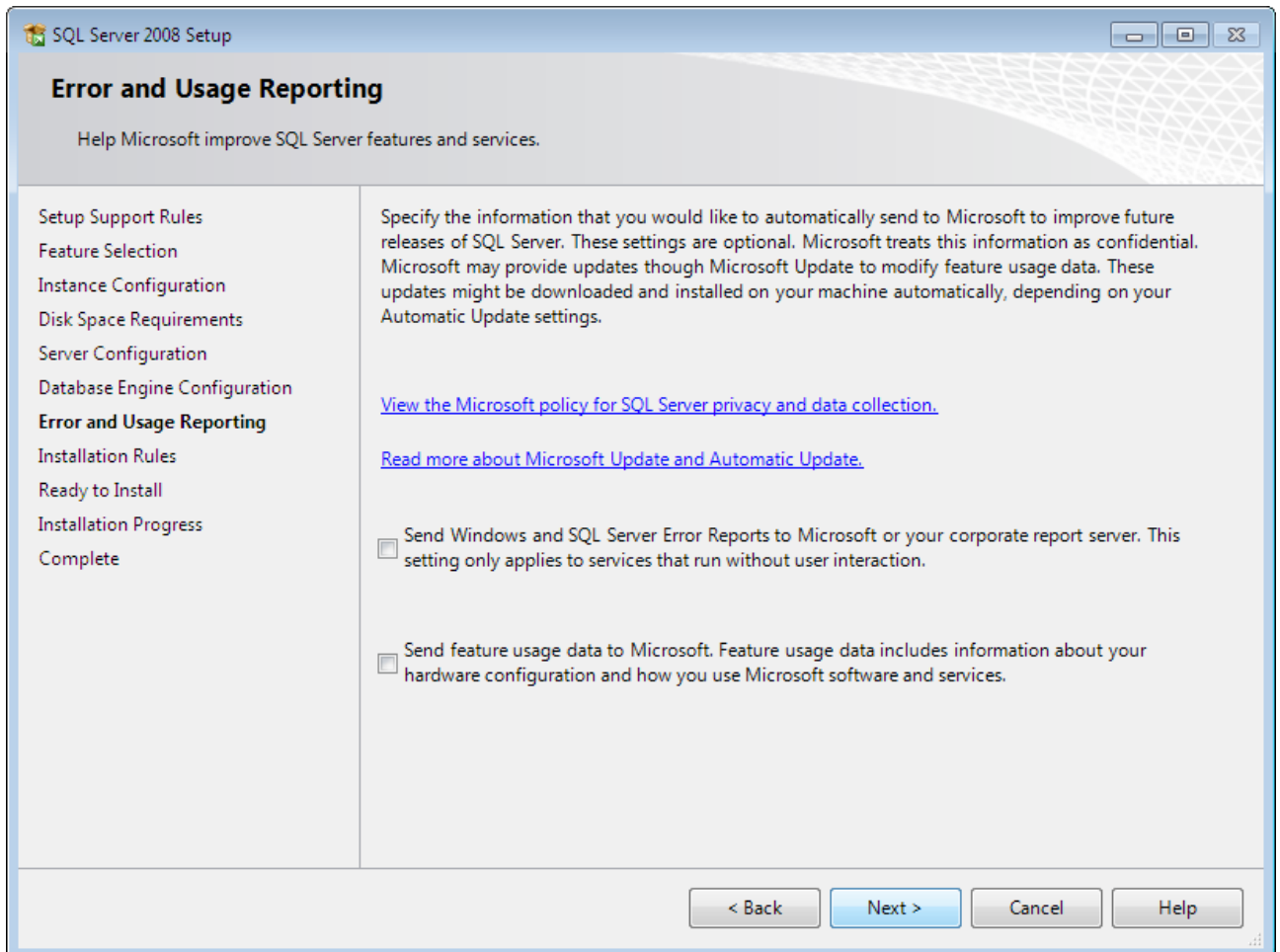
< Back Next > Cancel Help

Be sure that Windows Authentication Mode is selected, and hit the 'Add Current User' button, so your user name appears in the 'Specify SQL Server administrators' box:

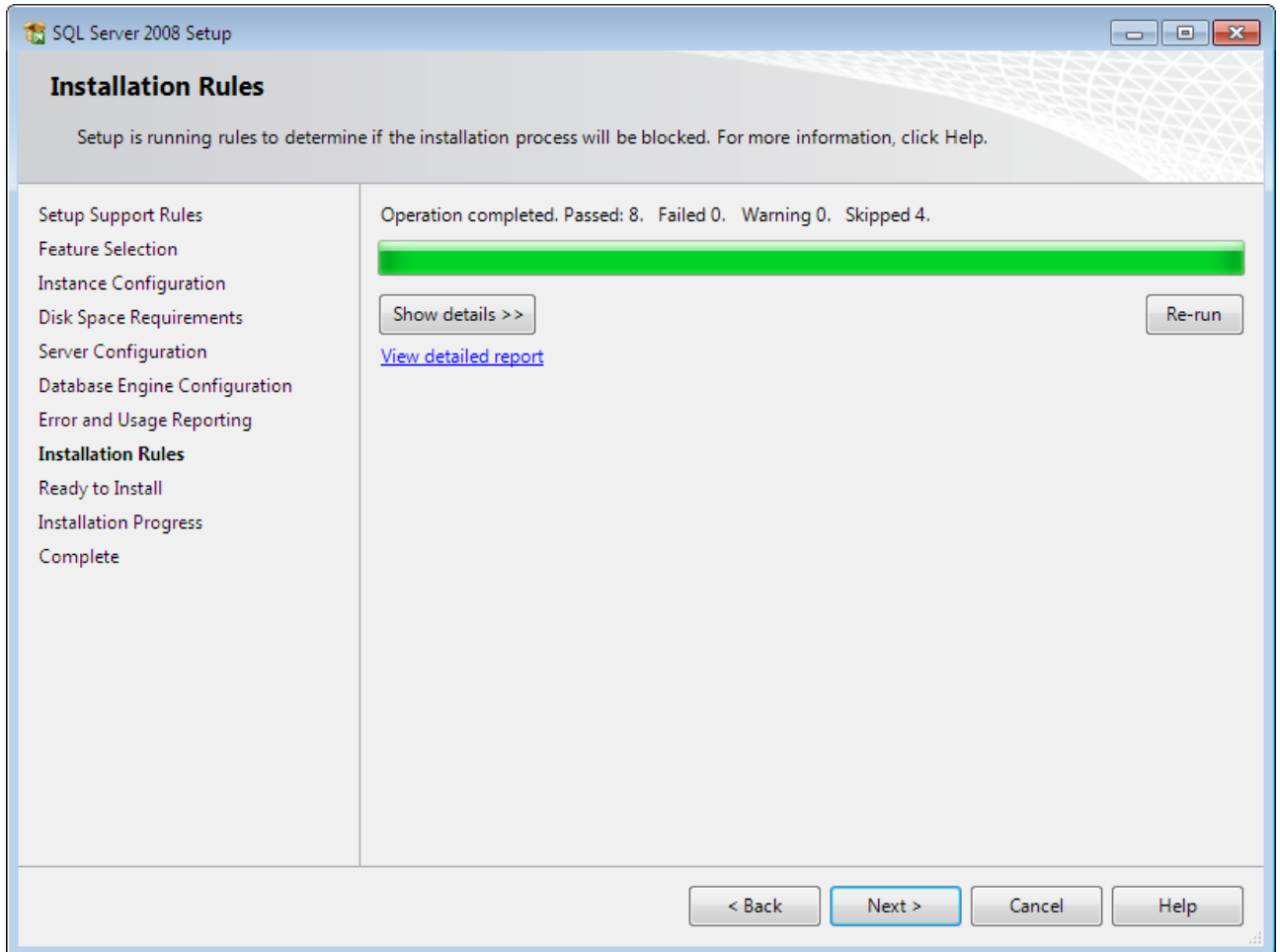


The screenshot shows the 'SQL Server 2008 Setup' window, specifically the 'Database Engine Configuration' tab. The window is titled 'SQL Server 2008 Setup' and has a subtitle 'Specify Database Engine authentication security mode, administrators and data directories.' The left sidebar lists the installation steps: Setup Support Rules, Feature Selection, Instance Configuration, Disk Space Requirements, Server Configuration, Database Engine Configuration (highlighted with a red arrow and the number 1), Error and Usage Reporting, Installation Rules, Ready to Install, Installation Progress, and Complete. The main area has four tabs: Account Provisioning (selected), Data Directories, User Instances, and FILESTREAM. Under 'Account Provisioning', the 'Authentication Mode' section has two radio buttons: 'Windows authentication mode' (selected) and 'Mixed Mode (SQL Server authentication and Windows authentication)'. Below this is the 'Built-in SQL Server system administrator account' section with 'Enter password:' and 'Confirm password:' fields. The 'Specify SQL Server administrators' section has a list box containing 'EIVA\hkp (Hans Kolind Pedersen)' (highlighted with a red arrow and the number 3). Below the list box are three buttons: 'Add Current User' (highlighted with a red arrow and the number 2), 'Add...', and 'Remove'. A note on the right states: 'SQL Server administrators have unrestricted access to the Database Engine.' At the bottom of the window are four buttons: '< Back', 'Next >', 'Cancel', and 'Help'.

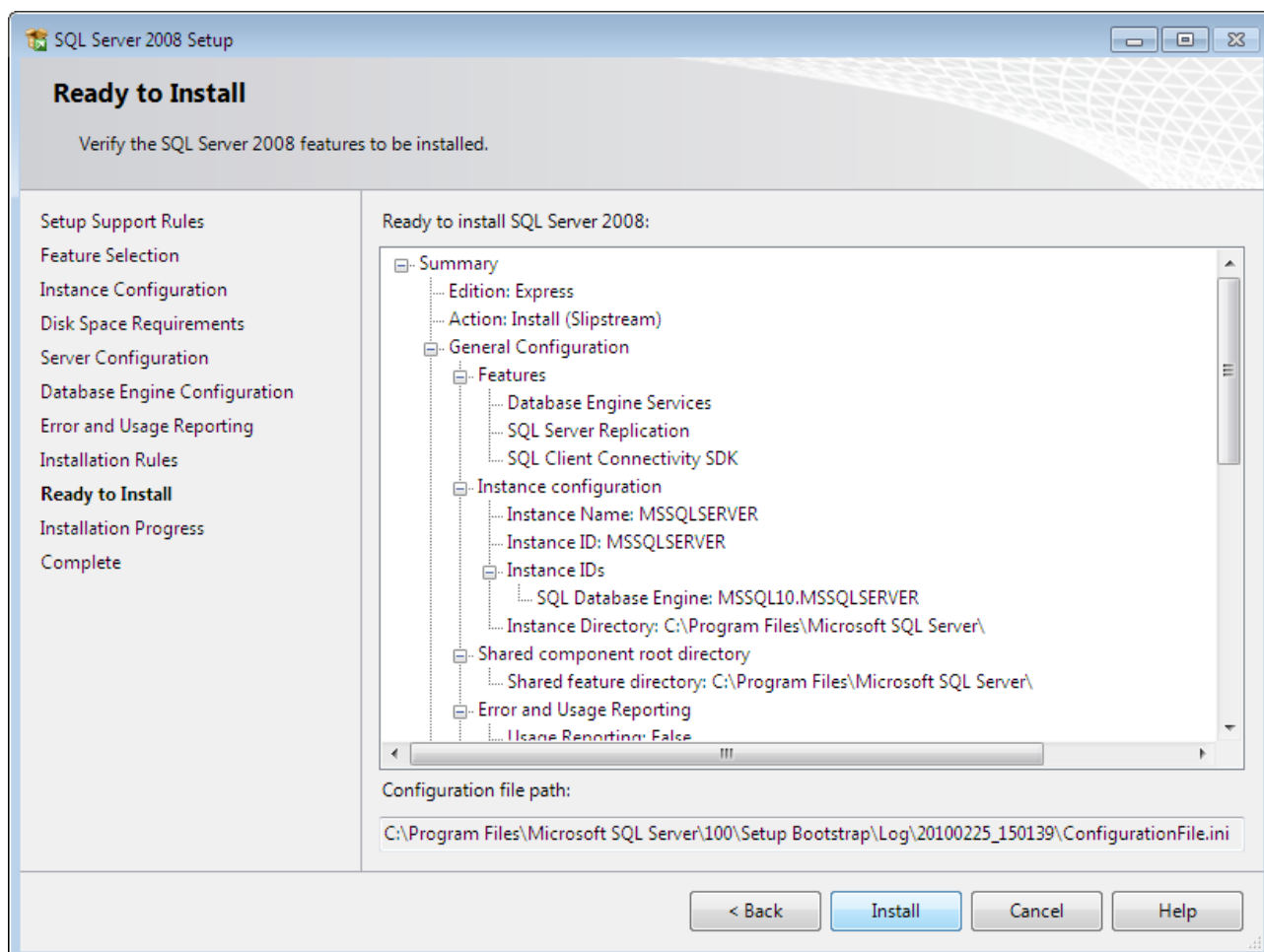
Hit next on the “Error and Usage Reporting”:



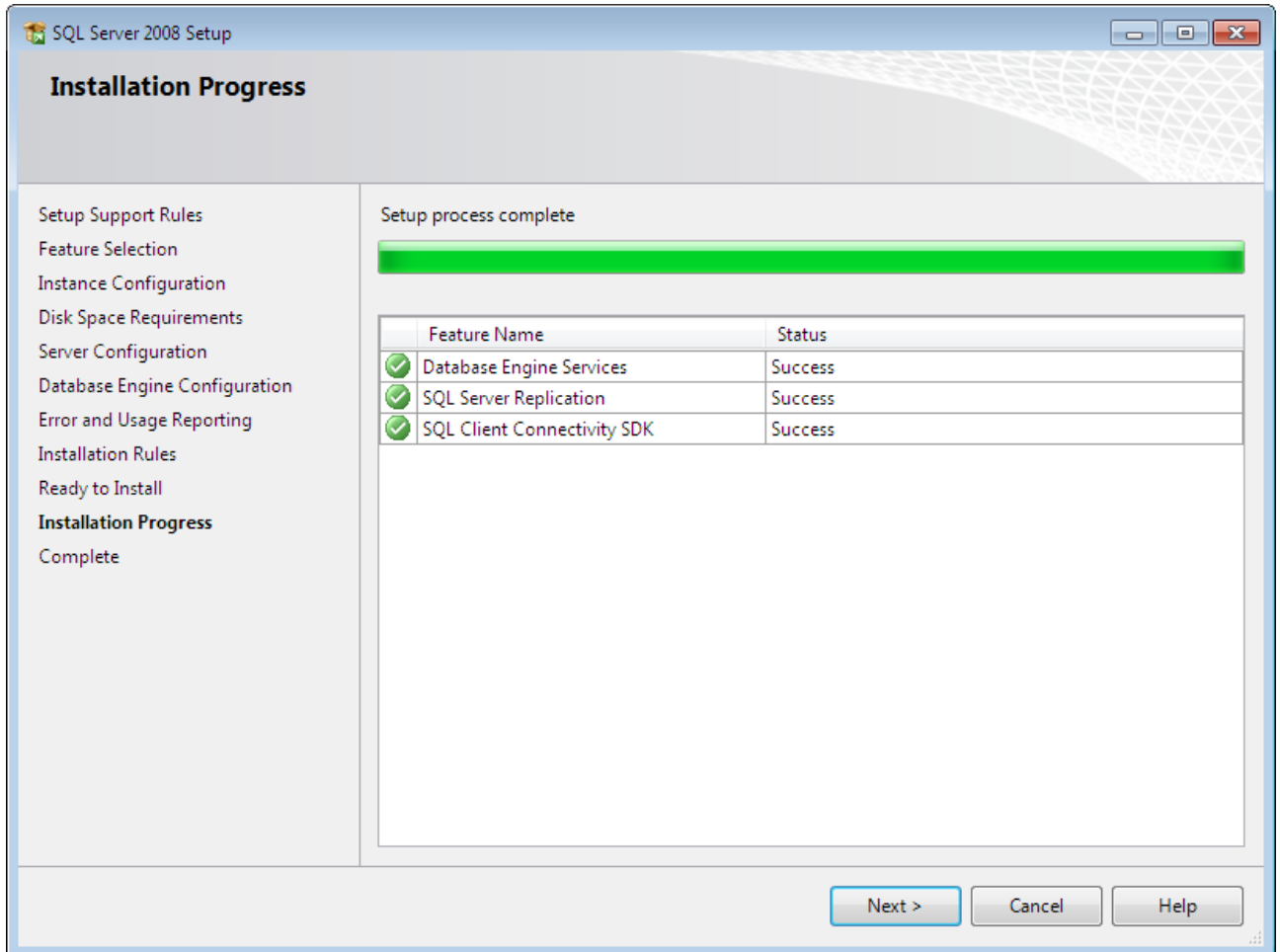
And next again:



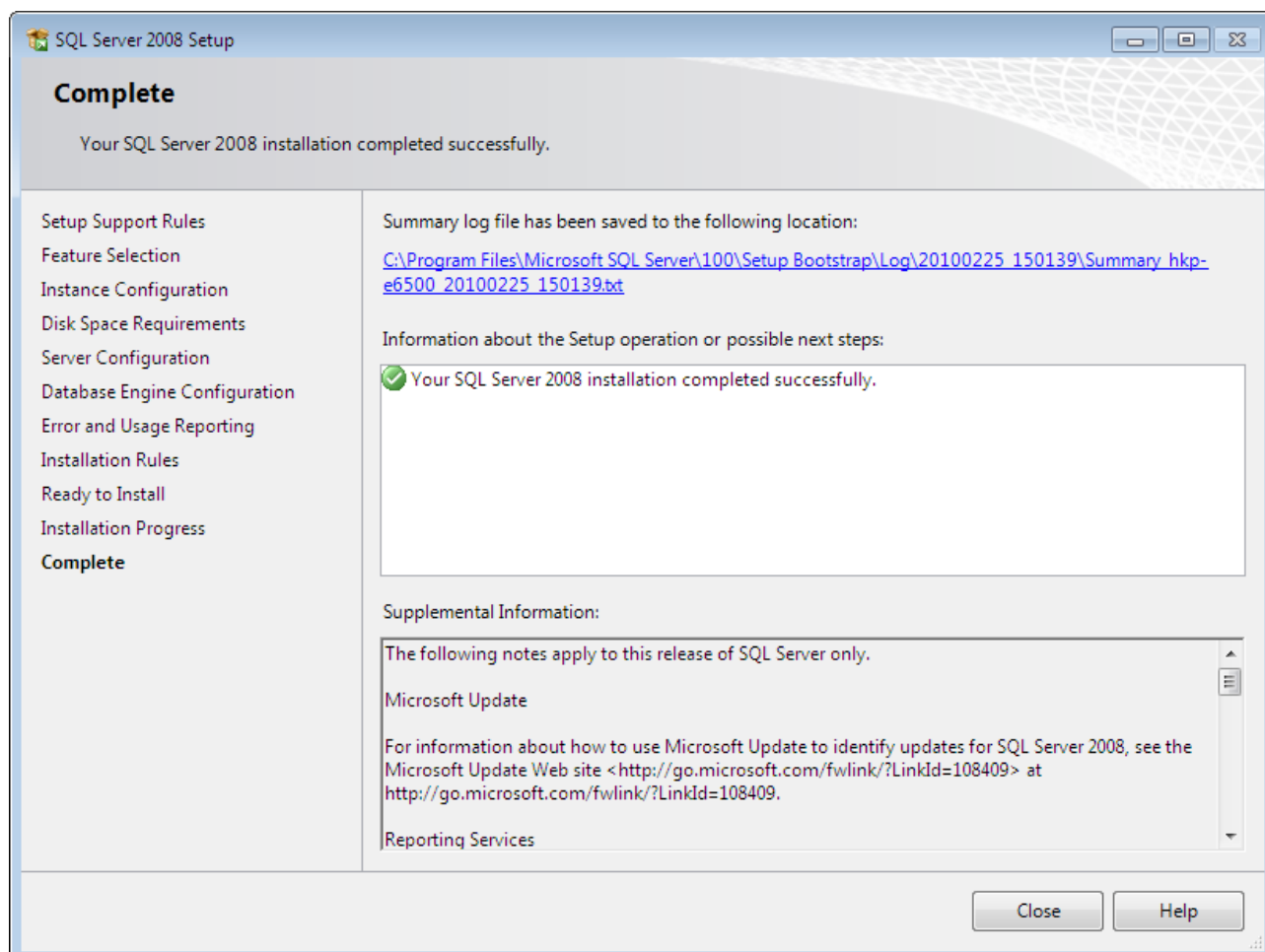
And finally install:



And next:

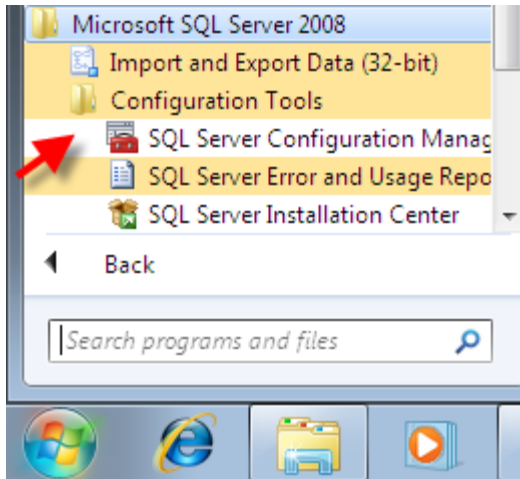


And close:

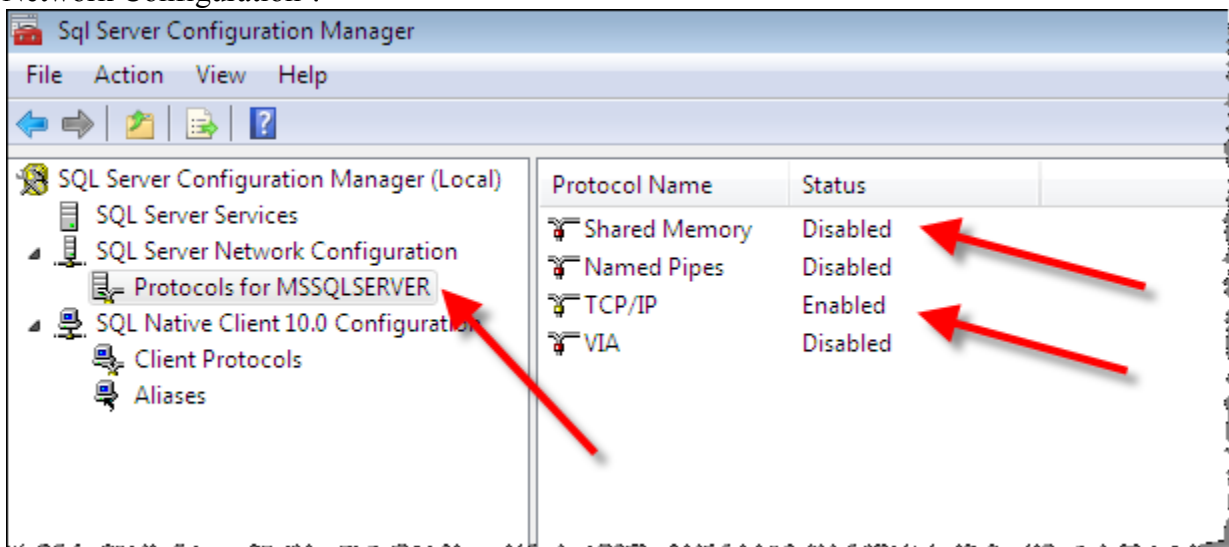


3 Post installation steps

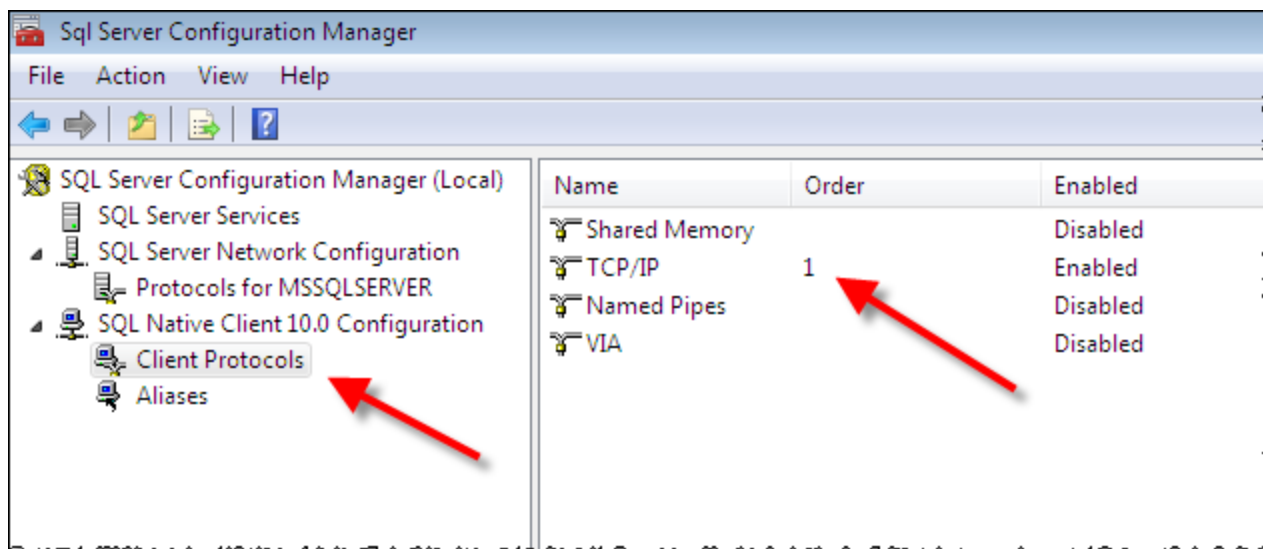
Select the Microsoft SQL Server 2008, SQL Server Configuration Manager from the Start menu:



Disable the 'Shared Memory' protocol and enable the TCP/IP protocol for the 'SQL Server Network Configuration':



And disable the 'Shared Memory' and the 'Named Pipes' protocols for the 'Client Protocols' so TCP/IP is the only enabled protocol:



And finally restart the MSSQLSERVER:

