

- English -

GPS Receiver GP-E2

Firmware Update Procedure

Cautions When Performing a Firmware Update

- Before performing a firmware update, save the GPS log files stored on the GPS Receiver GP-E2 on your computer. Once you have done this, delete the GPS log files stored on the GPS Receiver GP-E2.
- If the GPS Receiver GP-E2 power is turned off during a firmware update, it may not be possible to update firmware and a malfunction may occur. Always follow the points below when performing a firmware update.
 - Use a new AA alkaline battery. Do not use a rechargeable battery because, depending on usage conditions, the charged capacity may be insufficient even if they are fully charged.
 - Never turn the power switch of the GPS receiver GP-E2 to OFF during a firmware update.
- To prevent a malfunction, take sufficient care in regards to the following. During firmware updates and during deletion of the GPS files stored on the GPS Receiver GP-E2:
 - Do not operate switches, etc.
 - Do not open the battery compartment cover.
 - Do not disconnect the interface cable connected to the computer.

Firmware Update Procedure

➤ In this explanation of procedure, "X.X.X" indicates the firmware version name.

(1) Prepare items needed for the firmware update

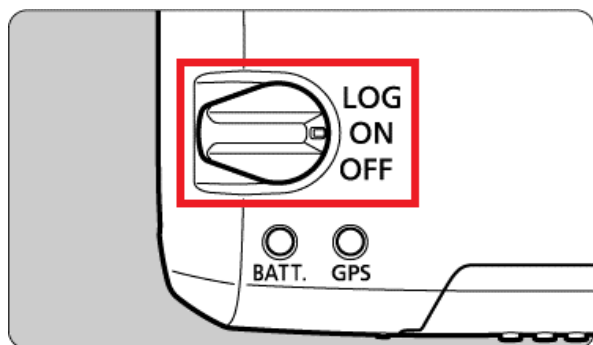
- GPS Receiver GP-E2 (hereafter abbreviated to GP-E2)
- New AA alkaline battery (do not use a rechargeable AA battery)
- Map Utility

*Install Map Utility on your computer beforehand. For installation procedures, please refer to the GP-E2 instruction manual.

- Interface cable to connect to the computer
- Downloaded firmware update file (gpe20XXX.FIR)

(2) Connect the GP-E2 to the computer

1. Turn the power switch of the GP-E2 to ON.



*Never turn the power switch to OFF during a firmware update.

2. Insert the larger plug of the interface cable supplied with the camera into the computer's USB terminal.

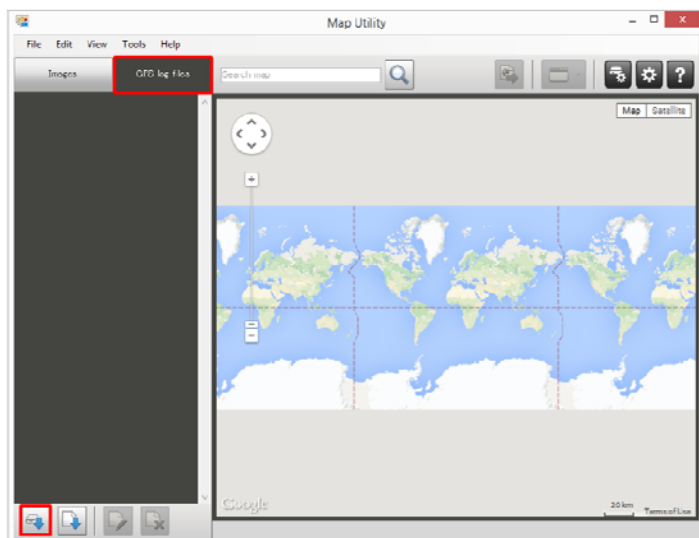
*For details on the positions and orientations of the USB terminals, refer to the computer instruction manual.

3. Insert the smaller plug of the interface cable supplied with the camera into the GP-E2's [DIGITAL] terminal.

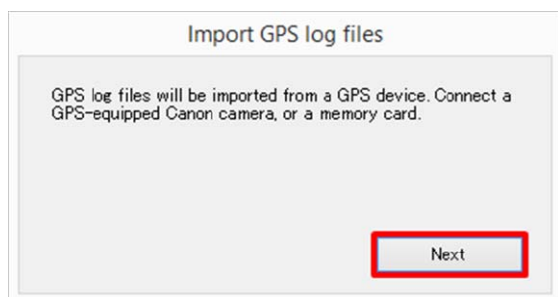
*The first time that the GP-E2 is connected to the computer the device driver software is automatically installed, so please wait until the device driver software is installed correctly.

(3) Save the GPS log files stored on the GP-E2 on your computer

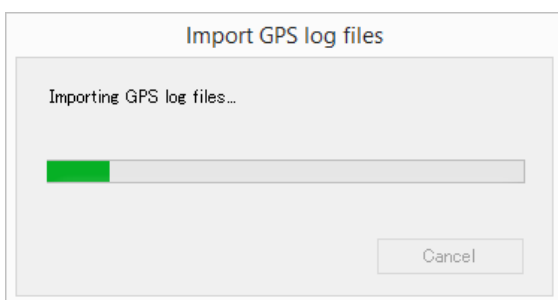
1. Start up Map Utility installed on your computer.
2. In the main window, select the [GPS log files] tab and click the [Import from GPS device] button.



3. The [Import GPS log files] confirmation window appears. Click [Next].



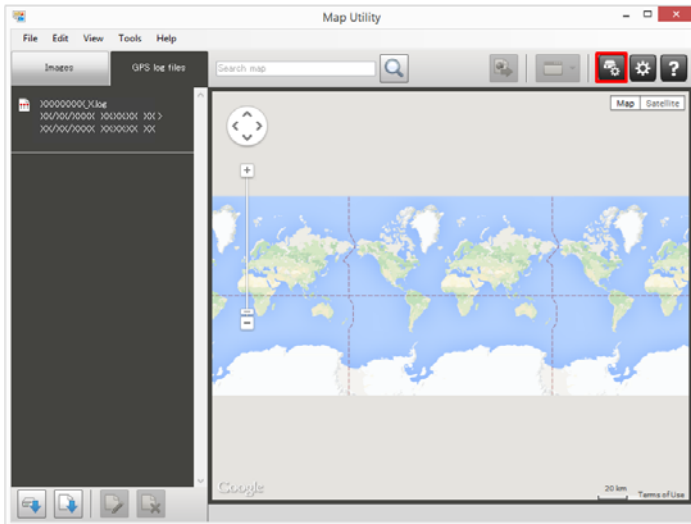
4. During importing, the window below is displayed.



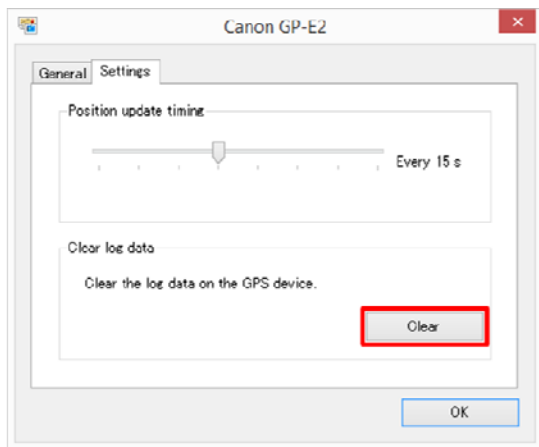
5. GPS log files are imported to the computer and added to the log file list on the [GPS log files] tab. Imported GPS log files are saved in the following locations:
Windows: [Canon Utilities] in the documents folder of the computer ➔ [GPS Log Files]
Macintosh: Documents ➔ [Canon Utilities] ➔ [GPS Log Files]

(4) Delete the GPS log files stored on the GP-E2

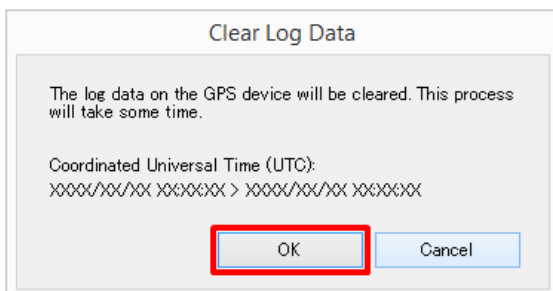
1. In the main window, click the [GPS device settings] button.



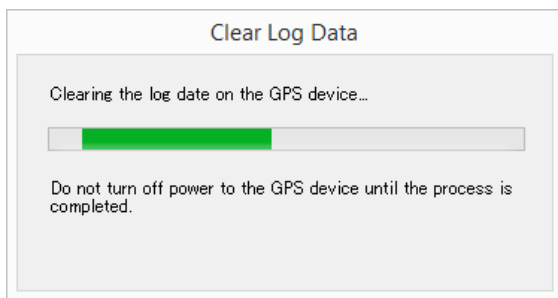
2. On the settings dialog box, select the [Settings] tab. Under [Clear log data], click the [Clear] button.



3. The [Clear Log Data] confirmation window appears. Click [OK].

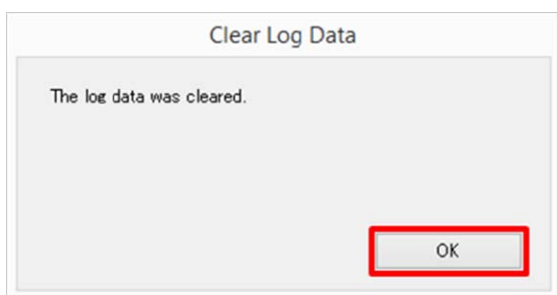


- During deletion of the GPS log files stored on the GP-E2, the window below is displayed.



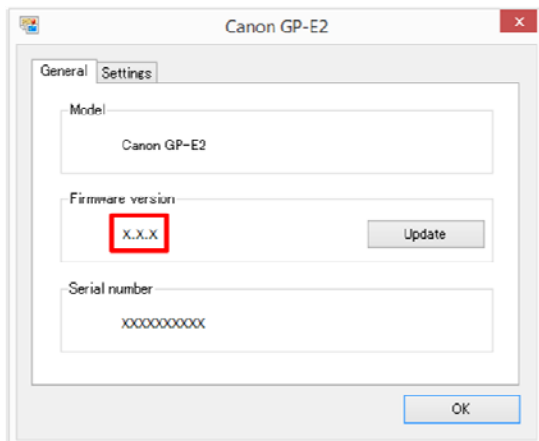
*To prevent a malfunction, during deletion of the GPS log files, never turn the power to OFF, do not open the battery compartment cover and do not disconnect the interface cable connected to the computer.

- When deletion of the GPS log files stored in the GP-E2 is finished, the [Clear Log Data] confirmation window appears. Click [OK].



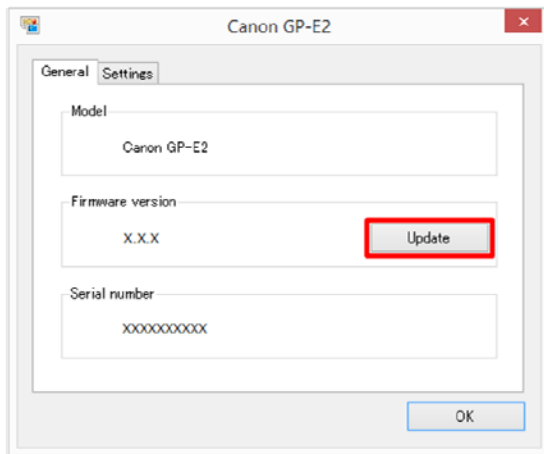
(5) Update the Firmware

- On the settings dialog box, select the [General] tab and confirm the current firmware version.



*There is no need to update the firmware if it is the latest version. Proceed to (5)-8

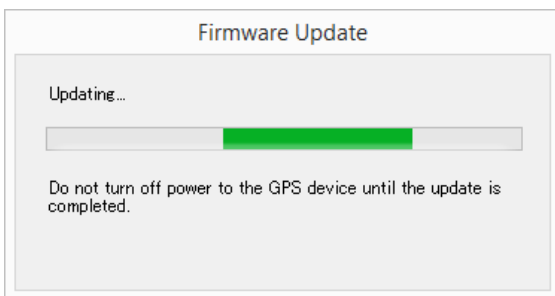
2. Click [Update].



3. The file selection window appears. Select the firmware update file and click [Open].
4. The [Firmware Update] confirmation window appears. Click [OK].

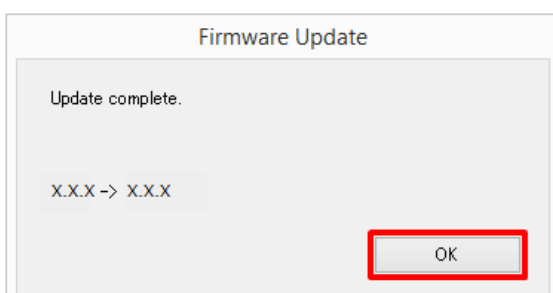


5. During the firmware update, the window below is displayed.

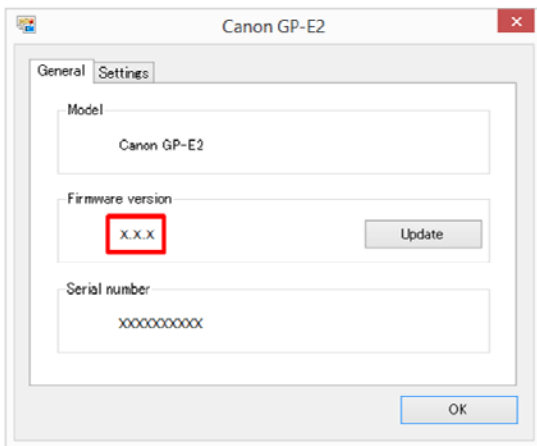


*To prevent a malfunction, during the firmware update, never turn the power to OFF, do not open the battery compartment cover and do not disconnect the interface cable connected to the computer. The firmware update takes approximately 1 minute.

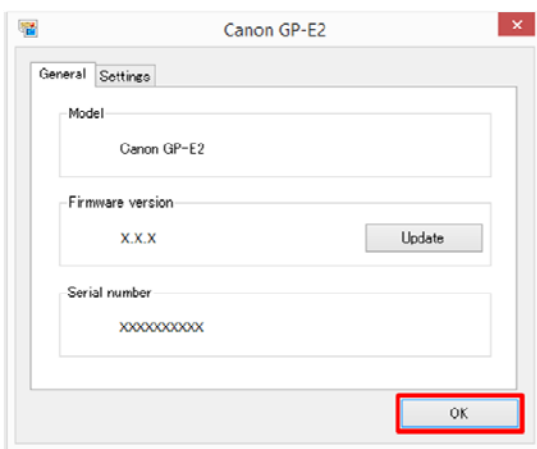
6. A confirmation window appears when the firmware update is finished. Click [OK].



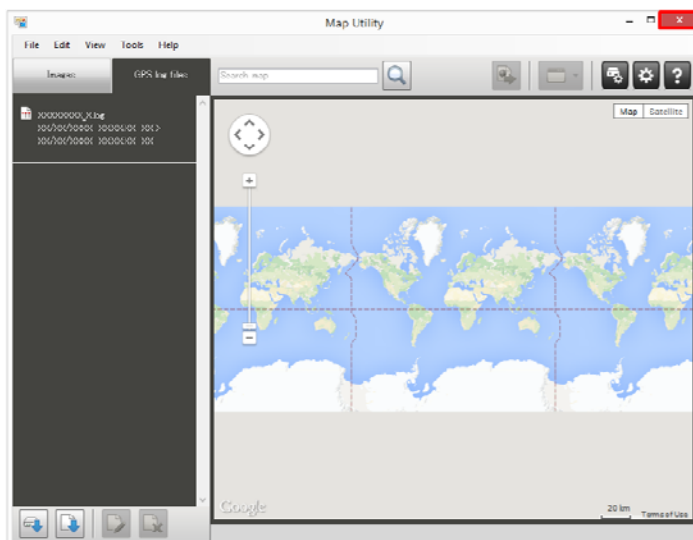
7. Confirm that the firmware version is the new version.



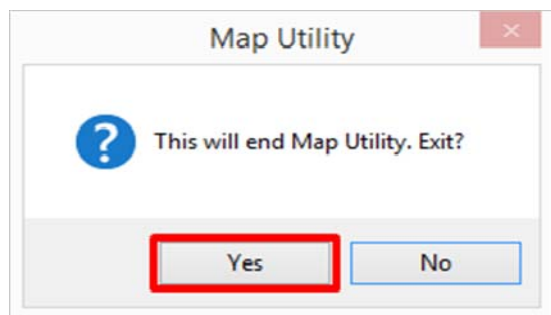
8. Click [OK] to complete the firmware update.



9. In the main window, click the [Close] button.



10. Click [Yes] to close Map Utility.



11. Turn the GP-E2's power OFF and disconnect the interface cable connected to the computer.

This completes the firmware update procedure.

Error window during firmware update

If an error window appears during a firmware update, please contact a Canon Call Center or Canon Service Center.

